

Analysis of the environmental Kuznets curve in the NAFTA Countries, 1971-2014

Análisis de la curva ambiental de Kuznets en los países del TLCAN, 1971-2014

MARIO GÓMEZ¹
JOSÉ CARLOS RODRÍGUEZ²

- **Abstract:** *Objetive:* This paper analyzes the environmental Kuznets curve (EKC) for the North American Free Trade Agreement (NAFTA) countries during 1971-2014. *Methodology:* In this regard, unit root, co-integration, and causality tests are applied making use of the data panel approach. *Results:* Results suggest that the series in this research are integrated of order one, and a long-run relationship among variables is observed. Besides, the EKC hypothesis is confirmed. In addition, the analysis shows that renewable energy and trade openness contribute to reducing pollution in these countries. *Limitations/implications:* Further research should be done to include other variables such as financial development and human capital. *Originality/value:* The present paper contributes to understanding the relationship between trade openness and renewable energy consumption, on the one hand, and pollution, on the other. *Conclusions:* Policies concerned to trade openness and environmental issues should consider renewable energy and trade to reduce pollutant emissions in these countries.
- **Keywords:** Causality, co-integration, environmental Kuznets curve, pollution, renewable energy.
- **JEL Classification:** C23, Q50.

¹ Economic and Business Research Institute, Universidad Michoacana de San Nicolás de Hidalgo, México. E-mail: mgomez@umich.mx

² Economic and Business Research Institute, Universidad Michoacana de San Nicolás de Hidalgo, México. E-mail: jrodriguez@umich.mx

- **Resumen:** *Objetivo (s):* Este artículo analiza la curva ambiental de Kuznets (EKC) para los países del Tratado de Libre Comercio de América del Norte (TLCAN) durante 1971-2014.

Metodología: En el trabajo se aplican pruebas de raíz unitaria, cointegración y causalidad haciendo uso de la metodología de datos panel.

Resultados: Los resultados de este trabajo sugieren que las series son integradas de orden uno y que relación a largo plazo entre las variables. Además, se confirma la hipótesis EKC. El análisis señala que la energía renovable y la apertura comercial contribuyen a la reducción de la contaminación en estos países.

Limitaciones/implicaciones: Los resultados sugieren la necesidad de llevar a cabo más investigaciones que incluyan otras variables como desarrollo financiero o capital humano.

Originalidad/valor: El presente artículo contribuye a entender la relación que existe entre la apertura comercial y el consumo de energía renovable, por un lado, y la contaminación, por el otro.

Conclusiones: Las políticas relacionadas con la apertura comercial y ambientales podrían considerar que las energías renovables y el comercio ayudan a reducir las emisiones contaminantes en estos países.

- **Palabras clave:** Causalidad, cointegración, curva ambiental de Kuznets, contaminación, energías renovables.
- **Clasificación JEL:** C23, Q50.
- Recepción: 11/12/2018

Aceptación: 06/03/2020

■ *Introduction*

The world's population has continued to increase, in absolute terms, although its growth rate has decreased since the 1970s. For example, from 1980 to 2000, the world population went from 4,400 to 6,000 million, and by 2018, it had reached 7,594 million (World Bank, 2020). This increase in population has amplified the demand for energy consumption in recent decades. Specifically, energy consumption, production, and international trade tend to move together, so it is very important to analyze their inter-relationships (Nasreen & Anwar, 2014). Trade openness allows developing countries to import advanced technologies that are less energy intensive and produce more goods. Energy can, in turn, affect trade openness in the following way: energy is indispensable in the production process, and it is necessary for the transportation of traded goods. If energy plays an important role in increasing the flow of goods, then policies to reduce energy consumption may negatively affect trade flows and the benefits of this same trade (imports or exports) (Nasreen & Anwar, 2014).

Hypotheses about the connection between economic growth and environmental degradation have been among the most important topics studied empirically in the literature of ecological economics since the 1990s, especially since carbon dioxide emissions are a main factor affecting global warming (Narayan & Narayan, 2010). In fact, of all the greenhouse gases, carbon dioxide (CO₂) emissions are the most problematic and difficult to manage, with a very long life span (50-200 years). Most CO₂ emissions, the evidence shows, are generated by energy consumption from fossil-fuel sources and by cement production (Azomahou, Laisney, & Van Phu 2006; Wang, 2012).

This increase in energy consumption generates negative consequences in terms of environmental degradation. Achieving greater economic growth with lower resource use without compromising the quality of life of future generations should be one of the main concerns of all governments in the world, due to the growing threat of global warming and climate change. Therefore, an urgent problem for those responsible for environmental policy is to understand and predict how environmental quality will evolve as economic activity increases (Onafowora & Owoye, 2014).

Despite increasing attention to the issue of pollution and corresponding efforts to reduce its negative effects, fossil fuels continue to be the main source of global energy consumption. In the last 25 years, these fossil fuels have accounted for 81% of global energy use. Between 1989 and 2014 the use of oil decreased from 37% to 31%, while the use of natural gas increased from 19% to 21% –and of coal from 25% to 28%– during this same period (International Energy Agency [IEA], 2016).

Every year, 6.1 million people die from air pollution caused mainly by the production and consumption of energy. The production and use of energy are the most significant individual sources of air pollution, accounting for 85% of the particulate pollution and almost all of the sulfur and nitrogen oxides released into the environment. These three pollutants either directly cause air pollution in the atmosphere, or indirectly cause it through chemical reactions (IEA, 2016).

The environmental Kuznets curve (EKC) hypothesis indicates an inverted U-shaped relationship between different pollutants and the level of per capita income (Dinda, 2004). At low levels of development, the amount and intensity of environmental degradation is restricted to subsistence economic activity. As economic development accelerates with the intensification of agriculture, the extraction of other resources, and the start of industrialization, resource depletion rates exceed the rate of resource regeneration, and the generation of waste increases in quantity and toxicity. At the highest levels of development, structural change toward information-intensive industries and services, together with a greater awareness of environmental damage, environmental spending, and the application of environmental regulations and better technology, allows for a gradual reduction of environmental degradation (Panayotou, 1993). Environmental pressures increase faster than income in the early stages of development, but subsequently, when the levels of economic growth are higher, environmental pressure slows down (Dinda, 2004). Recently, some of the research on the EKC hypothesis has included the consumption of renewable energy as one of the variables under study; including this variable helps support the hypothesis, because the increase in the share of renewable energy serves to reduce environmental pressure and dependence on fossil fuels (see for example Sarkodie & Ozturk, 2020).

The present paper focuses on the North American Free Trade Agreement (NAFTA) member countries as a particularly significant and telling case study. It is important to know if the EKC hypothesis is confirmed in this case, because the three North American countries are strongly interrelated and mutually integrated, as is reflected in their business relationships. For example, for the year 2015, Mexico's exports to, and imports from, the United States represented 81.18% and 47.39%, respectively, of all Mexico's exports and imports, while exports from the United States to Canada and Mexico constituted 18.62% and 15.72% of all U.S. exports, respectively. Further, although trade between Mexico and Canada still remains insignificant (World Bank, 2016), Canada's exports to, and imports from, the U.S. accounted for 76.66% and 53.25% of all Canadian exports and imports, respectively.

Because of the close relationships involved, an analysis of the NAFTA member countries promises to reveal evidence about the relationship between trade openness and renewable energy consumption vis-à-vis environmental pollution in these countries, in addition to evidence about the relationship between pollution and economic growth. This evidence, in turn, can be taken into account in the elaboration of economic and environmental policies that allow for greater economic growth while reducing environmental degradation. Indeed, taking advantage of the economic benefits of trade and reducing environmental degradation should be the main objectives of this treaty. Through an econometric analysis with panel data for the period 1971-2014, the relationships among economic growth, consumption of renewable energy, trade openness, and environmental degradation in the NAFTA member countries are analyzed to answer the following questions: Is there a long-run relationship between economic growth, consumption of renewable energy, trade openness, and environmental degradation for the NAFTA member countries? What is the direction of the causal relationships,

in Granger's sense, among the variables for the NAFTA member countries? Is the EKC hypothesis confirmed?

The article contributes to the current literature in two ways. First, it is the first study to analyze the Kuznets environmental curve in the NAFTA countries, including trade openness (TO) and renewable energy consumption (RE) as additional variables in the analysis. Second, the study evaluates the proposal recently developed by Dumitrescu and Hurlin (2012) to test causality in heterogeneous panel data models.

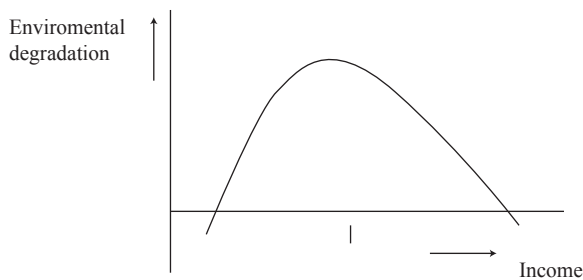
This article is structured as follows: After this introduction, a brief literature review is provided. Then, the third section outlines the econometric methodology and provides more details about the data used for the analysis. The fourth section presents and interprets the results, and fifth section concludes the study.

■ *Literature review*

Review of theoretical literature

The EKC hypothesis indicates an inverted U-shaped relationship between different pollutants and the level of per capita income (Dinda, 2004). That is, as shown in Figure 1, at the early stages of development, environmental pressure increases faster than income while at higher levels of economic growth, it is slower (Dinda, 2004).

Figure 1
Environmental Kuznets Curve



Source: Dinda (2004).

In the first stage of industrialization, the fastest growth causes greater use of natural resources and emission of pollutants, which impact the environment. People are indifferent to the consequences of the degradation of the environment due to economic growth. In the stage after industrialization, when income increases, people value the environment more and regulatory institutions become more effective so that pollution levels decrease (Dinda, 2004). The hypothesis explains that when the level of income of the country is low, there is a positive relationship between income and environmental degradation. When the country reaches a certain level of economic development,

however, the relationship is negative (Al-Mulali Tang, & Ozturk, 2015). To test the EKC hypothesis, the following model can be used (Dinda, 2004):

$$(1) \quad y_t = \beta_1 + \beta_2 x_t + \beta_3 x_t^2 + \beta_4 x_t^3 + \beta_5 z_t + e_t$$

where y is an indicator of environmental degradation, x is the level of income, and z are other variables that can influence the environment. From equation (1), several relationships between environmental impacts and modes of development/economic growth can be tested (Dinda, 2004). The hypothesis is fulfilled only when $\beta_2 > 0, \beta_3 < 0, \beta_4 = 0$

in equation (1), and the turning point or inflection is obtained when $x^* = -\frac{\beta_3}{2\beta_2}$.

The EKC hypothesis establishes that emissions are a function of income and presumes a unidirectional causal relationship leading from income to emissions (Apergis & Payne, 2009). The hypothesis also carries with it important political implications. One concerns the inevitability of environmental degradation in the development path of a given country, that is, during the early stage of industrialization. Another concerns the effects of higher per capita income later in the development process, when economic growth goes from being an enemy of the environment to a friend. Here the question remains whether such late shifts can undo the environmental damage done previously, typically for extended periods of time (Panayotuo, 1993). All this being said, however, economic growth does seem to be a powerful way to improve environmental quality in developing countries. If economic growth is good for the environment, policies aiming to stimulate growth, such as trade openness or economic reform, should also be good for the environment (Panayotuo, 1993). It seems that in the long run, the best way to improve the environment is to become rich (Beckerman, 1992). In other words, when there is (as the EKC hypothesis predicts) an inverse relationship between economic growth and environmental degradation in an economy, it means that economic development causes an environmental improvement after per capita income reaches a critical threshold (Pontarollo & Mendieta Muñoz, 2020; Sarkodie & Ozturk, 2020). According to Zilio (2012), this pattern can be explained as follows: if the poorest sectors of society cannot cover their basic needs, such as nutrition, education, and healthcare, they will not demand environmental improvements (Zilio, 2012). Conversely, the richest societies will demand measures to achieve less environmental degradation and exert pressure to establish protective measures and stricter regulations (Dinda, 2004).

Finally, the literature in this area considers the impact of trade liberalization on the environment through three channels. The first channel is the scale effect due to the fact that trade liberalization increases the size of the market, production, and therefore emissions. The second is the technical effect, which refers to the importation of more efficient and environmentally friendly technology. The third is the composition effect, which suggests that trade liberalization can reduce or increase emissions depending on whether a given country has a comparative advantage when it comes to clean versus dirty industries (Antweiler, Copeland & Taylor, 2001). It is evident that this third

channel, though it depends on the other two, will carry the strongest environmental impacts.

Review of empirical literature

Panayotou (1993) was one of the first authors to prove the hypothesis that an inverted U relationship exists between environmental degradation and economic development, and to explore the economic policy implications of that hypothesis for employment, technology transfer, and development assistance. Based on cross-sectional data, their results support the hypothesis of an inverted U for a sample of developed and developing countries. This inverted U is called the EKC hypothesis because of its similarity to the relationship between inequality and development.

It should be noted that there is an extensive literature consisting of empirical studies of the EKC hypothesis; those studies have not, however, produced results about which there is a generalized consensus. The following studies that provide evidence in favor of the hypothesis: Adebola Solarin, Al-Mulalia, and Ozturk (2017); Ahmad, Du, Lu, Wang, and Li (2017); Al-Mulali et al. (2015); Hanif and Gago de Santos (2017); Ike, Usmanab, and Sarkodie (2020); Riti, Song, Shu, and Kamah (2017); Sarkodie and Ozturk, 2020; Sinha and Bhattacharya (2017); Yang, Lou, Sun, Wang, and Wang (2017); Zhang et al. (2017); Zhao, Guo, and Zhao (2018); Zoundi (2017). Studies that found evidence contradicting the EKC hypothesis are: Alshehry and Belloumi (2017); Ben Jebli and Ben Youssef (2015); Catalán (2014); Cheng, Ren, and Wang (2019); Lin, Omoju, Nwakeze, Okonkwo, and Megbowon (2016); Özokcu and Özdemir (2017); Ozturk and Al-Mulali (2015); Pablo-Romero and De Jesús (2016); Pontarollo and Mendieta Muñoz (2020); Shujah-ur-Rahman, Chen, Saud, Saleem, and Bari (2019); Vlontzos, Niavis, and Pardalos (2017). In other studies, the evidence is mixed; for example: Alam, Murad, Noman, and Ozturk (2016); Al-Mulali, Ozturk, and Solarin (2016); Apergis, Christoua, and Gupta (2017); Azam and Kham (2016); Liu, Kim, Liang, and Oh-Sang (2018); Sterpu, Soava, and Mehedintu (2018); Urban and Nordensvärd (2018); likewise, there are many studies of the direction(s) of causality between the variables of economic growth and carbon dioxide emissions, but these studies, too, have not reached a consensus on the results (see for example, Alshehry & Belloumi, 2015; Cowan, Chang, Inglesi-Lotz & Gupta, 2014; Chang, 2010; Soytaş & Sari, 2009; Zhang & Cheng, 2009). In addition to analyzing the relationship between these variables, researchers have included additional economic variables to avoid the problem of the omitted variable, such as energy consumption, capital, labor, exports, imports, trade openness, and foreign direct investment (FDI) (see, for example, Al-Mulali et al., 2015; Apergis & Payne, 2009). Research on the EKC hypothesis has also included the consumption of renewable energy as one of the variables under study, because the evidence shows that the increase in renewable energy consumption can help reduce environmental pressure and dependence on fossil fuels (see, for example, Al-Mulali et al., 2016; Cheng et al., 2019; Liobikiene and Butkus, 2017; Liu, Zhang & Bae, 2017; Nassani, Aldakhil, Abro, & Zaman, 2017; Sarkodie & Ozturk, 2020; Shafiei & Salim, 2014; Shujah-ur-Rahman et al., 2019; Sugiawan & Managi, 2016; Zoundi, 2017).

Building on this work, the present study includes trade openness (TO) and the consumption of renewable energy (RE) as additional variables. In the case of trade openness, it is important to mention how trade relationships have affected pollution after the implementation of NAFTA in 1994, since the affected countries are now strongly interrelated as trading partners.

■ *Methodology and data*

According to previous studies (for example, Apergis & Payne, 2009; Hamit-Hagggar, 2012), the long-run relationships among CO₂ per capita, RE, GDP per capita, GDP per capita squared, and TO, can be tested with the following model:³

$$(2) \quad CO_{2it} = \beta_{0it} + \beta_{1i}RE_{it} + \beta_{2i}GDP_{it} + \beta_{3i}GDP_{it}^2 + \beta_{4i}TO_{it} + e_{it}$$

where i indicates the cross section (the three countries), t is the time range of the data period, and e_{it} represents the error term. The parameters β_1 , β_2 , β_3 , and β_4 represent the long-run elasticity from energy consumption, GDP, GDP squared, and TO with respect to CO₂ emissions, respectively.

It is expected that $\beta_1 < 0$ because an increase in the use of renewable energy can generate a decrease in emissions. To test the EKC hypothesis ($\beta_2 > 0, \beta_3 < 0$), an increase in the level of income implies an increase in emissions during the early stages of development and thus the U-inverted form is expected. For its part, $\beta_4 > 0$; its value can be positive because energy plays an important role in trade flows.

In the analysis of time-series variables, it is important to know the order of integration and verify if there is co-integration between the variables to avoid obtaining spurious results. The econometric literature suggests that unit root tests in panel data have greater power than time-series unit root tests. By combining time-series data and cross-sectional data, a greater number of observations can be achieved, as well as more degrees of freedom, more variability, less collinearity, and greater efficiency (Baltagi, 1995). The most commonly used unit root tests with panel data are the LLC test (Levin, Lin, & Chu, 2002); the IPS test (Im, Pesaran & Shin, 2003); Fisher-type tests using ADF, or ADF-Fisher; and the PP test, or PP-Fisher (Choi, 2001; Maddala & Wu, 1999).

The LLC test assumes a common unit root process, while the other three tests allow an individual root unit process. The following ADF model is considered in the LLC root test:⁴

$$(3) \quad \Delta y_{i,t} = \rho_i y_{i,t-1} + \sum_{j=1}^{p_i} \beta_{ij} \Delta y_{i,t-j} + \varepsilon_{i,t}$$

³ It is important to mention that a cubed GDP variable was also included in the model, as suggested by Dinda (2004); however, it was not statistically significant, and in addition inclusion of this variable changed the signs of the coefficients of the other variables and rendered them insignificant as well. For these reasons, this variable was ultimately excluded from the model.

⁴ The model can include both constant and linear trends.

In this test, it is assumed that the parameter ρ_i is identical for the cross sections, $\rho_i = \rho$ for all i , while the lags p_i can vary freely. Testing for unit root, the null hypothesis must be specified as follows: $H_0: \beta_i = \beta = 0$ for all i , against the alternative hypothesis $H_1: \beta_i = \beta < 0$ for all i of no unit root. For the IPS test, the same model (3) is considered but it differs from the LCC test because it assumes that ρ_i varies between the cross sections. In this way, the null hypothesis can be written as $H_0: \beta_i = 0$ for all i , against the alternative $H_1: \beta_i < 0, i = 1, \dots, N1; \beta_i = 0, i = N1, \dots, N$ for all i . The acceptance of the alternative hypothesis allows some series to be integrated.

The most common Ordinary Minimum Screening (OLS) technique for estimating the coefficients of panel-data models turns out to be biased and produces inconsistent estimates when the variables are co-integrated. Recently, new methods have been developed to estimate co-integration relationships using panel data, such as the Fully Modified OLS (FMOLS) and Dynamic OLS (DOLS) estimators (Kao & Chiang, 2001; Pedroni, 2001; Phillips & Moon, 1999).

These approximations produce estimators of coefficients that are asymptotically unbiased and normally distributed (Kao & Chiang, 2001; Pedroni, 2001). Pedroni (2001) argues that the FMOLS estimator behaves relatively well, and that even in small samples it generates consistent estimates and allows the endogeneity of its regressors and the serial correlation to be controlled. Due to these considerations, the present study uses both FMOLS and DOLS estimators for co-integrated heterogeneous panels. Additionally, two additional estimation methods were applied to test the robustness of the results (Generalized Method of Moment [GMM]; Robust Least Squares [RLS]).

The co-integration analysis tests the existence or not of a long-term relationship between the variables. Granger (1988) points out that if the variables are co-integrated, there must be a causal relationship in at least one direction. One of the important issues in the econometrics of panel data is the heterogeneity of cross-sectional units. To deal with this issue, a new proposal is considered that involves a standardized panel statistic with good results even in small samples.

This proposal was recently developed by Dumitrescu and Hurlin (2012) to test causality in heterogeneous panel-data models. They noted that in such contexts, there are two dimensions to be considered: the heterogeneity of the causal relationship, and the heterogeneity of the regression model used. Therefore, the null hypothesis of homogeneous non-causality (that is, there is no causal relationship between the panel units) is presented against the alternative that there are two subgroups: one characterized by a causal relationship between two variables, and the other characterized by no causal relationship between these two variables. The rejection of the null hypothesis does not entail knowing the number or identities of the particular units of the panel for which that hypothesis has been rejected (Dumitrescu & Hurlin, 2012).

This study uses annual data from the NAFTA countries for the period 1971-2014. The variables included are GDP per capita (in constant dollars of 2010), CO₂ per capita (in metric tons), and trade openness (defined as exports plus imports as % of GDP). Data for these variables were taken from the World Bank (2020). The data for RE (measured in thousand toe, tonne of oil equivalent) were taken from the Renewable Energy Indica-

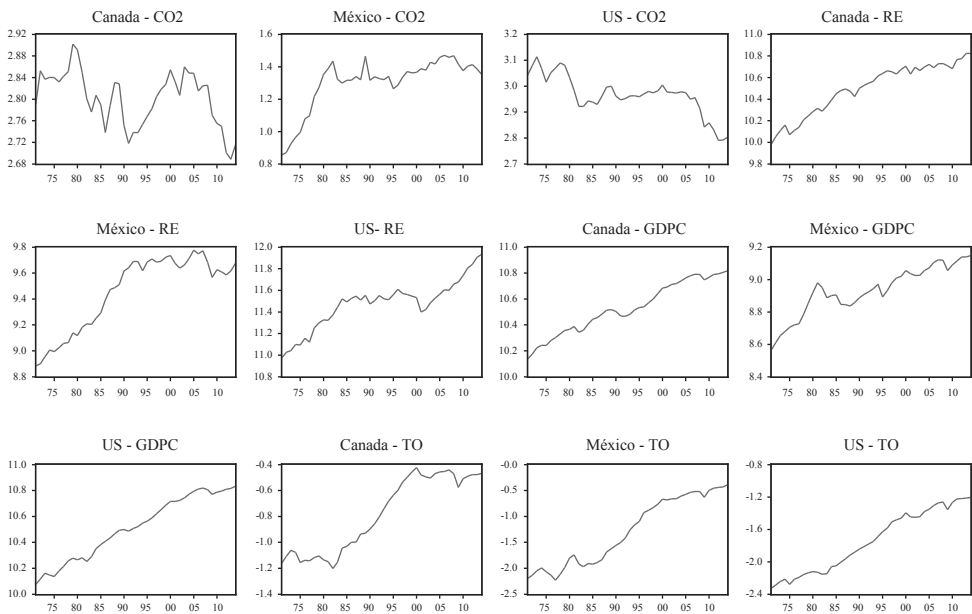
tors of the Organization for Economic Cooperation and Development (OECD, 2018). All variables are expressed in natural logarithms.

■ *Analysis of results*

Figure 2 shows data for the variables used in the analysis. In the case of CO₂, Mexico and Canada both show a growing trend with large jumps in some years. Overall, though, the three countries exhibit a decreasing trend in this variable since 2005. In relation to RE, Canada shows a growing trend during this period, while the United States and Mexico level off during the years 1985 to 2000 and 1990 to 2010, respectively. But both countries trend upward, with respect to RE, after those periods. In relation to the GDP variable, all three countries show a growing trend during the years of the analysis, with Mexico being subject to some peaks and valleys at different points in this period. Finally, the TO variable shows a growing trend in the three countries for much of the period, though with a slowing-down trend in the case of Canada after 2000.

The growth of trade promotes economic interdependence through imports, exports, and foreign investment. For this reason, because this article analyzes the NAFTA countries, it is very important to first apply a cross-sectional dependence test in the series

Figure 2
Variables used in the analysis of NAFTA countries



Source: World Bank (2019).

before applying standard panel unit root tests (Ahmed, 2017; De Hoyos & Sarafidis, 2006; Pesaran, 2007).

Table 1
Results of Pesaran (2004) test for cross-sectional dependence

Variable	CO ₂	GDP	GDP Squared	RE	TO
CD statistic	-0.221	10.899***	10.901***	10.248***	11.272***
P value	0.824	0.000	0.000	0.000	0.000

Note: *** denotes the rejection of the null hypothesis at the 1% level.

Table 1 shows the results of the test for cross-sectional dependency. For all variables other than the CO₂ variable, the null hypothesis of cross-sectional dependence is rejected at 1% significance; for the CO₂ variable, the null hypothesis cannot be rejected. Therefore, for most of the variables, there is cross-sectional dependence, and the variables of each country are correlated with each other.

In order to know the order of integration of the variables and the possible presence of co-integration, the unit root tests are applied first. Table 2 shows the results of the LLC, IPS, ADF-Fisher, and PP-Fisher tests. These tests show that the existence of the unit root cannot be rejected for all the variables in levels; but they are stationary in first differences at a level of significance of 1%, from which it can be concluded that they are integrated in order 1. However, it is very important to apply unitary root tests that generate consistent results in the absence of cross-sectional independence and heterogeneity across countries in the panel (Riti et al., 2017).

Table 2
Results of unit root tests with panel data

Variable	Deterministic Parameters	LLC Test	IPS Test	ADF-Fisher Test	PP-Fisher Test
CO ₂	CT	0.165	0.235	4.377	2.919
GDP	CT	-0.167	-0.714	7.581	5.421
GDP squared	CT	-0.073	-0.741	7.559	5.284
RE	CT	0.029	1.349	2.924	2.875
TO	CT	1.137	1.416	1.557	2.019
First difference					
ΔCO ₂	C	-9.862***	-8.729***	68.431***	67.701***
ΔGDP	C	-8.491***	-6.564***	48.763***	46.620***
ΔGDP squared	C	-8.518***	-6.571***	49.513***	46.560***
ΔRE	C	-8.668***	-9.709***	77.294***	79.952***
ΔTO	C	-9.574***	-7.775***	59.836***	58.960***

Note: *** denotes the rejection of the null hypothesis at the 1% level. C denotes constant and CT denotes constant and trend.

Table 3
Results of Cross-sectional Augmented Dickey Fuller (CADF) and Cross-sectional Im, Pesaran, and Shin (CIPS) panel unit root test (Pesaran, 2007)

Variable	Deterministic Parameters	CADF	CIPS
CO ₂	CT	-1.103	-2.469
GDP	CT	-0.325	-1.601
GDP squared	CT	-0.283	-1.480
RE	CT	1.569	-1.561
TO	CT	-1.545	-2.045
First difference			
ΔCO ₂	C	-6.214***	-5.405***
ΔGDP	C	-2.750***	-3.913***
ΔGDP squared	C	-2.650***	-3.894***
ΔRE	C	-4.567***	-6.190***
ΔTO	C	-5.525***	-4.805***

Note: *** denotes the rejection of the null hypothesis at the 1% level. C denotes constant and CT denotes constant and trend.

Table 3 shows the unit root results of these new tests. The tests confirm that the variables are integrated in order one; all variables have unit roots in levels but are stationary in first differences. To test the presence of an equilibrium or long-run relationship among the integrated variables of the same order, two co-integration tests with panel data are used in this investigation: the Pedroni (2001) and Kao (1999) tests.

The Pedroni cointegration test includes seven statistics; the results of the test are presented in Table 4. The null hypothesis of non-cointegration is rejected by the Panel v, Panel PP, ADF Panel, Group PP, and ADF Group statistics; that is, the test shows that there is in fact a long-run relationship among the variables.

Table 4
Results of Pedroni co-integration test

Test	Statistic
Panel v	2.908***
Panel rho	-1.049
Panel PP	-2.244**
Panel ADF	-1.591*
Grupo rho	-0.226
Grupo PP	-2.371***
Grupo ADF	-1.750**

Note: ***, **, and * denote the rejection of the null hypothesis at the 1%, 5%, and 10% levels, respectively.

With the Kao test in Table 5, the null hypothesis of non-cointegration is rejected at 5% significance; this result confirms that there is a long-run or equilibrium relationship among the variables. The most common OLS technique for estimating the coefficients of panel-data models turns out to be biased and produces inconsistent estimates when the variables are co-integrated. In the present study, the FMOLS, DOLS, GMM and RSL estimators are used.

Table 5
Results of Kao co-integration test

Test	Statistic
ADF	-1.952**
P-value	(0.025)

Note: ** denotes the rejection of the null hypothesis at the 5% level.

According to Table 6, with the FMOLS, DOLS, GMM and RSL estimators, all the variables are statistically significant at 1% except the TO in the case of the DOLS. The long-run elasticity of GDP is positive; this result implies that as economic activity increases, carbon dioxide emissions increase.

Table 6
Results of estimation of long-run parameters

Variable	DOLS	FMOLS	GMM	RSL
	Coefficients	Coefficients	Coefficients	Coefficients
GDP	6.999***	8.689***	11.249***	11.278***
GDP squared	-0.329***	-0.418***	-0.525***	-0.526***
RE	-0.267***	-0.105***	-0.032***	-0.032***
TO	-0.002	-0.065***	-0.218***	-0.215***

Note: *** denotes the rejection of the null hypothesis at the 1% level.

In addition, the EKC hypothesis is supported by the results for the NAFTA countries since the coefficient of the GDP is positive and GDP squared is negative, and both are statistically significant. These results indicate that economic development causes an environmental improvement after reaching the required inflection point for the level of per capita income in these countries. At the same time, the coefficients of TO and RE are negative with all estimators, meaning that trade openness and renewable energy contribute to reduce polluting emissions. Trade openness can help to import or export machinery and products friendlier to the environment. Therefore, these countries should encourage policies that promote free trade and the production and consumption of renewable energy that does not harm the environment.

It is evident that trade openness has helped these NAFTA countries to benefit from trade and reduce polluting emissions, although currently the three countries are rene-

gotiating NAFTA because it is argued, mainly by the United States, that it has been an unfair treaty for them due to the U.S. trade deficit with Mexico. The mercantilist vision of Donald Trump rests on a zero-sum game, whereby what one country earns, the other loses. Hence, according to Trump, the trade deficits were not good and had to be eradicated in a line of argument that goes back to the mercantilists of the 16th century (Esquivel, 2017).

The new United States-Mexico-Canada Agreement (USMCA), which is in the process of being approved by the three countries, represents a new chapter in relation to the environment (Chapter 24). In general terms, in the new agreement, the three countries agree to combat oceanic garbage that affects marine ecosystems, ban commercial whaling, and stop illegal species trafficking, among other environmentally deleterious activities (USMCA, 2019). However, in terms of energy use, the new agreement continues to promote fossil-fuel dependence, not the transition to renewable energy. This feature of the agreement ignores the problem of climate change and foregrounds only economic interests. There are a series of actions carried out by the United States that show the evidence of this, such as the exit of this country of PARIS CLIMATE AGREEMENT in 2017. According to the IEA (2019), after three years of partial stabilization of CO₂ from fuel combustion, those emissions began to increase again in 2017 and 2018, coupled with a stagnation in the growth of renewable energies.

Once the existence of a long-term relationship among the variables has been confirmed, there must be a causal relationship in at least one direction (Granger, 1988).

Table 7
Results of Granger causality test results

Dependent variables	ΔCO_2	ΔGDP	Short run $\Delta\text{GDP squared}$	ΔTO	ΔRE	Long run ECT-1
ΔCO_2	-	15.292***	0.056	0.982	0.029	-0.176***
ΔGDP	5.657***	-	0.678	2.448*	0.342	-0.055*
$\Delta\text{GDP squared}$	2.889*	-0.146	-	2.939*	0.182	-0.830
ΔTO	4.377**	5.384***	5.827***	-	1.021	-0.055
ΔRE	0.201	5.453***	1.074	0.727	-	-0.058

Note: ***, ** and * denote statistical significance at the 1, 5 and 10% level, respectively.

According to Table 7, in the long term, there is indeed a causal relationship running from the RE, TO, and economic activity variables toward polluting emissions. This causal relationship is established at a level of significance of 1%, which implies that these variables have an important weight and help to better predict the behavior of this last variable. There is also a causal relationship running from RE, TO, and environmental pollution toward economic activity; this relationship is established at a level of significance of 10%. In the short term, meanwhile, there are bidirectional causal relationships between polluting emissions and economic activity, and between TO and economic activity; these relationships are established at a level of significance of 10%

or better. Finally, there is a unidirectional causal relationship running from GDP toward RE; this relationship is established at a level of significance of 1%.

It should be underscored that these results were generated from an analysis where the existence of heterogeneity between the units of the analysis is not considered. However, one of the key issues in the econometrics of panel data is the heterogeneity of cross-sectional units. To deal with such issues, a recent proposal developed by Dumitrescu and Hurlin (2012) to test causality in heterogeneous panel data models can be factored into the analysis. To this end, the null hypothesis of homogeneous non-causality (that is, there is no causal relationship among the panel units) is presented against the alternative that there are two subgroups: one characterized by a causal relationship between two variables, and the other characterized by no causal relationship between these two variables.

Table 8
Results of the heterogeneous causality test

Null hypothesis	Wald test	Decision
GDP does not homogeneously cause CO ₂	5.598***	Reject
CO ₂ does not homogeneously cause GDP	1.214	Accept
GDP squared does not homogeneously cause CO ₂	5.440***	Reject
CO ₂ does not homogeneously cause GDP squared	1.132	Accept
TO does not homogeneously cause CO ₂	4.182**	Reject
CO ₂ does not homogeneously cause TO	3.089**	Reject
RE does not homogeneously cause CO ₂	1.440	Accept
CO ₂ does not homogeneously cause RE	1.303	Accept
GDP squared does not homogeneously cause GDP	1.464	Accept
GDP does not homogeneously cause GDP squared	1.409	Accept
TO does not homogeneously cause GDP	1.809	Accept
GDP does not homogeneously cause TO	6.547***	Reject
ER does not homogeneously cause GDP	1.006	Accept
GDP does not homogeneously cause RE	0.869	Accept
TO does not homogeneously cause GDP squared	1.869	Accept
GDP squared does not homogeneously cause TO	6.352***	Reject
RE does not homogeneously cause GDP squared	1.013	Accept
GDP squared does not homogeneously cause RE	0.921	Accept
RE does not homogeneously cause TO	0.451	Accept
TO does not homogeneously cause RE	3.419**	Reject

Note: *** and ** denote the rejection of the null hypothesis at the 1% and 5% levels, respectively.

According to Table 8, there is a causal relationship running from economic activity toward carbon dioxide emissions; as expected, higher production generates higher energy consumption and greater environmental pollution. There is a bidirectional causal relationship between TO and polluting emissions; both variables are

complementary, and each one provides important information that can help predict the behavior of the other. There is a unidirectional causal relationship running from economic activity to TO. This relationship implies that the production of the NAFTA countries influences trade, and reflects the fact that a large part of the production of these countries is for trade with each another. There is also a unidirectional causal relationship running from TO to the consumption of RE; that is, more trade is expected to generate greater economic activity and energy consumption, which in turn leads to greater emphasis on RE.

According to Esquivel (2014), if the benefits of NAFTA are analyzed in terms of the agreement's immediate objectives (trade and investment), the results are relatively favorable, albeit with a clear loss of dynamism in recent years. However, if NAFTA is evaluated in terms of its final objectives, the results do not seem to be favorable. When overall economic growth is considered, the agreement's performance was very poor: the gaps between business partners and net migration figures were not closed; nor were there improved salary levels or decreased poverty levels. Arguably, however, the lack of good economic results cannot be exclusively attributed to NAFTA. The absence of such favorable results may be due to other economic policy decisions or to the lack of other specific actions that could have helped to enhance the advantages brought about by NAFTA (Esquivel, 2014).

It is, however, very difficult to distinguish the effects of NAFTA from other factors (Ramírez, 2003). Relevant factors include, for example, the accumulated appreciation of the peso (which caused lower-than-expected growth of exports and greater-than-expected growth of imports); the social discontent that was reflected in the armed movement of the Zapatistas initiated on January 1, 1994 (allegedly in response to Mexico's entry into NAFTA); and the political uncertainty generated by the assassination of the PRI candidate (Luis Donaldo Colosio) on March 23, 1994, as well as the Secretary General of the PRI (Mario Ruiz Massieu) in September of the same year. These events resulted in a currency crisis in 1994-95, as capital inflows were not sustained in the long term. Other important factors include the deceleration of demand from the United States beginning in 2001 and the upheaval of the world economy in 2007-2008.

■ *Conclusions and policy implications*

The relationship between economic growth and environmental degradation has been one of the most important hypotheses analyzed empirically in the recent literature in ecological economics. The growth in population worldwide increases the demand for goods and services, and thereby increases the demand for energy consumption. Despite greater attention to the issue of pollution and corresponding efforts to reduce its negative effects, however, fossil fuels continue to dominate global energy consumption.

As a case study revealing many of the key issues involved in ecological economy and econometrics, this article analyzes the EKC hypothesis for the NAFTA countries during the period 1971-2014. The study assumes that these countries are strongly inter-related and integrated, as shown in their trade relations, and that they have benefited

from the trade that began to be stimulated by this treaty in 1994. Because of this strong interrelationship, unit root tests, co-integration, and causality tests with panel data were used. The results show that the series are integrated of order one and that there are long-run relationships among the variables under study. For these countries, the EKC hypothesis is confirmed, meaning that economic development causes an environmental improvement after reaching the inflection point of per capita income in these countries.

The RE and TO variables have a negative impact on pollution; this impact implies that greater TO and increased use of RE will contribute to reduce polluting emissions. Unfortunately, this causal relationship, confirmed by the present paper, is not reflected in the new trade agreement between the three North American countries. Instead, in the Environment Chapter of the new agreement, fossil fuels continue to be promoted, not a transition to renewable energy.

The analysis also reveals a unidirectional causal relationship running from economic activity to CO₂ emissions, as expected, because currently, despite efforts to use renewable energy sources, the use of energy from fossil fuels still predominates strongly in the production of goods and services. The study establishes, too, a causal relationship between economic activity and TO, given that much of the production of goods and services from these countries is destined for international trade. At the same time, when it comes to TO and polluting emissions, there is a bidirectional causal relationship. This result confirms the importance of comprehensively planning out the trade and environmental policies of the NAFTA countries, in a manner that allows for the production and trade of goods and services that are friendlier to the environment in the region.

In sum, the benefits of free trade can be exploited without neglecting the environmental consequences of economic activity. In extending this research, other important variables that can affect environmental degradation, such as financial development, human capital, and urban population density, will need to be considered. In addition, other pollution measures will need to be used, as well as tests for the possible presence of structural changes in the economies under investigation.

■ *Acknowledgments*

This work was supported by the National Council for Science and Technology (Consejo Nacional de Ciencia y Tecnología [CONACYT]) in Mexico (N265826-2016).

■ *References*

- Adebola Solarina, S., Al-Mulalia, U., & Ozturk, I. (2017). Validating the environmental Kuznets curve hypothesis in India and China: The role of hydroelectricity consumption. *Renewable and Sustainable Energy Reviews*, 80, 1578-1587. DOI: <https://doi.org/10.1016/j.rser.2017.07.028>
- Ahmad, N., Du, L., Lu, J., Wang, J., & Li, H.Z. (2017). Modelling the CO₂ emissions and economic growth in Croatia: Is there any environmental Kuznets curve? *Energy*, 123, 164-172. DOI: <https://doi.org/10.1016/j.energy.2016.12.106>

- Ahmed, K. (2017). Revisiting the role of financial development for energy-growth-trade nexus in BRICS economies. *Energy*, 128, 487-495. DOI: <https://doi.org/10.1016/j.energy.2017.04.055>
- Alam, M.D.M., Murad, M.D.W., Noman, A.H.M.D. & Ozturk, I. (2016). Relationships among carbon emissions, economic growth, energy consumption and population growth: Testing environmental Kuznets curve hypothesis for Brazil, China, India and Indonesia. *Ecological Indicators*, 70, 466-479. DOI: <https://doi.org/10.1016/j.ecolind.2016.06.043>
- Al-Mulali, U., Ozturk, I., & Solarin, S.A. (2016). Investigating the environmental Kuznets curve hypothesis in seven regions: The role of renewable energy. *Ecological Indicators*, 67, 267-282. DOI: <https://doi.org/10.1016/j.ecolind.2016.02.059>
- Al-Mulali, U., Tang, C.F. & Ozturk, I. (2015). Estimating the environment Kuznets curve hypothesis: Evidence from Latin America and Caribbean countries. *Renewable and Sustainable Energy Reviews*, 50, 918-924. DOI: <https://doi.org/10.1016/j.rser.2015.05.017>
- Alshehry, A.S. & Belloumi, M. (2015). Energy consumption, carbon dioxide emissions and economic growth: The case of Saudi Arabia. *Renewable and Sustainable Energy Reviews*, 41, 237-247. DOI: <https://doi.org/10.1016/j.rser.2014.08.004>
- Alshehry, A.S. & Belloumi, M. (2017). Study of the environmental Kuznets curve for transport carbon dioxide emissions in Saudi Arabia. *Renewable and Sustainable Energy Reviews*, 75, 1339-1347. DOI: <https://doi.org/10.1016/j.rser.2016.11.122>
- Antweiler, W., Copeland, B.R. & Taylor, M.S. (2001). Is free trade good for the environment? *American Economic Review*, 91 (4), 877-908. DOI: <http://www.jstor.org/stable/2677817>
- Apergis, N., Christoua, Ch., & Gupta, R. (2017). Are there environmental Kuznets curves for US state-level CO₂ emissions? *Renewable and Sustainable Energy Reviews*, 69, 551-558. DOI: <https://doi.org/10.1016/j.rser.2016.11.219>
- Apergis, N. & Payne, J.E. (2009). CO₂ emissions, energy usage, and output in Central America. *Energy Policy*, 37 (8), 3282-3286. DOI: <https://doi.org/10.1016/j.enpol.2009.03.048>
- Azam, M., & Kham, A.Q. (2016). Testing the environmental Kuznets curve hypothesis: A comparative empirical study for low, lower middle, upper middle and high income countries. *Renewable and Sustainable Energy Reviews*, 63, 556-567. DOI: <https://doi.org/10.1016/j.rser.2016.05.052>
- Azomahou, T., Laisney, F., & Van Phu, N. (2006). Economic development and CO₂ emissions: A nonparametric panel approach. *Journal of Public Economic*, 90 (6/7), 1347-1363. DOI: <https://doi.org/10.1016/j.jpubeco.2005.09.005>
- Baltagi, B.H. (1995). *Econometric analysis of panel data*. New York, USA: John Wiley and Sons.
- Beckerman, W. (1992). Economic growth and the environment: Whose growth? Whose environment? *World Development*, 20 (4), 481-496. DOI: [https://doi.org/10.1016/0305-750X\(92\)90038-W](https://doi.org/10.1016/0305-750X(92)90038-W)

- Ben Jebli, M. & Ben Youseff, S. (2015). Output, renewable and non-renewable energy consumption and international trade: Evidence from a panel of 69 countries. *Renewable Energy*, 83, 799-808. DOI: <https://doi.org/10.1016/j.renene.2015.04.061>
- Catalán, H. (2014). Curva ambiental de Kuznets: Implicaciones para un crecimiento sustentable. *Economía Informa* (389), 19-37. DOI: [https://doi.org/10.1016/S0185-0849\(14\)72172-3](https://doi.org/10.1016/S0185-0849(14)72172-3)
- Chang, C.C. (2010). A multivariate causality test of carbon dioxide emissions, energy consumption and economic growth in China. *Applied Energy*, 87 (11), 3533-3537. DOI: <https://doi.org/10.1016/j.apenergy.2010.05.004>
- Cheng, C., Ren, X., & Wang, Z. (2019). The impact of renewable energy and innovation on carbon emission: An empirical analysis for OECD countries. *Energy Procedia*, 158, 3506-3512. DOI: <https://doi.org/10.1016/j.egypro.2019.01.919>
- Choi, I. (2001). Unit root tests for panel data. *Journal of International Money and Finance*, 20 (2), 249-272. DOI: [https://doi.org/10.1016/S0261-5606\(00\)00048-6](https://doi.org/10.1016/S0261-5606(00)00048-6)
- Cowan, W.N., Chang, T., Inglesi-Lotz, R., & Gupta, R. (2014). The nexus of electricity, economic growth and CO₂ emissions in the BRICS countries. *Energy Policy*, 66, 359-368. DOI: <https://doi.org/10.1016/j.enpol.2013.10.081>
- De Hoyos R.E., & Sarafidis, V. (2006). Testing for cross-sectional dependence in panel data models. *The Stata Journal*, 6 (4), 482-496. Retrieved from <https://www.stata-journal.com/sjpdf.html?articlenum=st0113>
- Dinda, S. (2004). Environmental Kuznets curve hypothesis: A survey. *Ecological Economics*, 49 (4), 431-455. DOI: <https://doi.org/10.1016/j.ecolecon.2004.02.011>
- Dumitrescu, E.I., & Hurlin, C. (2012). Testing for Granger non-causality in heterogeneous panels. *Economic Modelling*, 29 (4), 1450-1460. DOI: <https://doi.org/10.1016/j.econmod.2012.02.014>
- Esquivel, G. (2014). El TLCAN: 20 años de claroscuros. *Foreign Affairs Latin*, 14 (2), 7-16. Retrieved from <http://revistafal.com/numeros-anteriores/fal-14-2/>
- Esquivel, G. (2017, 14 de febrero). La vida sin el TLCAN. *El Universal*. México. Retrieved from <http://www.eluniversal.com.mx/entrada-de-opinion/articulo/gerardo-esquivel/nacion/2017/02/14/la-vida-sin-tlcan>
- Granger, C.W.J. (1988). Some recent development in a concept of causality. *Journal of Econometrics*, 39 (1/2), 199-211. DOI: [https://doi.org/10.1016/0304-4076\(88\)90045-0](https://doi.org/10.1016/0304-4076(88)90045-0)
- Hamit-Haggag, M. (2012). Greenhouse gas emissions, energy consumption and economic growth: A panel cointegration analysis from Canadian industrial sector perspective. *Energy Economics*, 34 (1), 358-364. DOI: <https://doi.org/10.1016/j.eneco.2011.06.005>
- Hanif, I., & Gago de Santos, P. (2017). The importance of population control and macroeconomic stability to reducing environmental degradation: An empirical test of the environmental Kuznets curve for developing countries. *Environmental Development*, 23, 1-9. DOI: <https://doi.org/10.1016/j.envdev.2016.12.003>
- Ike, G.N., Usmanab, O., & Sarkodie, S.A. (2020). Fiscal policy and CO₂ emissions from heterogeneous fuel sources in Thailand: Evidence from multiple structural breaks

- cointegration test. *Science of The Total Environment*, 702, 1-11. DOI: <https://doi.org/10.1016/j.scitotenv.2019.134711>
- Im, K.S., Pesaran, M.H. & Shin, Y. (2003). Testing for unit roots in heterogeneous panels. *Journal of Econometrics*, 115 (1), 53-74. DOI: [https://doi.org/10.1016/S0304-4076\(03\)00092-7](https://doi.org/10.1016/S0304-4076(03)00092-7)
- International Energy Agency-IEA. (2016). *Energy and air pollution. World energy outlook special report*. Retrieved from <http://pure.iiasa.ac.at/id/eprint/13467/1/WorldEnergyOutlookSpecialReport2016EnergyandAirPollution.pdf>
- International Energy Agency-IEA. (2019). CO₂ emissions from fuel combustion 2019. Retrieved from http://wds.iea.org/wds/pdf/Worldco2_Documentation.pdf
- Kao, C. (1999). Spurious regression and residual based tests for cointegration in panel data. *Journal of Econometrics*, 90 (1), 1-44. DOI: [https://doi.org/10.1016/S0304-4076\(98\)00023-2](https://doi.org/10.1016/S0304-4076(98)00023-2)
- Kao, Ch. & Chiang, M.H. (2001). On the estimation and inference of a cointegrated regression in panel data. In B.H. Baltagi, T.B. Fomby, & R. Carter Hill (Eds.), *Non-stationary panels, panel cointegration, and dynamic panels* (Advances in econometrics, vol. 15; pp. 179-122). UK: Emerald Group Publishing Limited.
- Levin, A., Lin, C.F., & Chu, C.S.J. (2002). Unit root tests in panel data: Asymptotic and finite-sample properties. *Journal of Econometrics*, 108 (1), 1-24. DOI: [https://doi.org/10.1016/S0304-4076\(01\)00098-7](https://doi.org/10.1016/S0304-4076(01)00098-7)
- Lin, B., Omoju, O.E., Nwakeze, N.M., Okonkwo, J.U., & Megbowon, E.T. (2016). Is the environmental Kuznets curve hypothesis a sound basis for environmental policy in Africa? *Journal of Cleaner Production*, 133, 712-724. DOI: <https://doi.org/10.1016/j.jclepro.2016.05.173>
- Liobikiene, G., & Butkus, M. (2017). Environmental Kuznets curve of greenhouse gas emissions including technological progress and substitution effects. *Energy*, 135, 237-248. DOI: <https://doi.org/10.1016/j.energy.2017.06.120>
- Liu, H., Kim, H., Liang, S., & Oh-Sang, K. (2018). Export diversification and ecological footprint: A comparative study on EKC theory among Korea, Japan and China. *Sustainability*, 10 (10), 1-12. DOI: <https://doi.org/10.3390/su10103657>
- Liu, X., Zhang, S., & Bae, J. (2017). The impact of renewable energy and agriculture on carbon dioxide emissions: Investigating the environmental Kuznets curve in four selected ASEAN countries. *Journal of Cleaner Production*, 164, 1239-1247. DOI: <https://doi.org/10.1016/j.jclepro.2017.07.086>
- Maddala, G.S., & Wu, S.A. (1999). Comparative study of unit root tests with panel data and a new simple test. *Oxford Bulletin of Economics and Statistics*, 61 (S1), 631-652. DOI: <https://doi.org/10.1111/1468-0084.0610s1631>
- Narayan, P.K., & Narayan, S. (2010). Carbon dioxide emissions and economic growth: Panel data evidence from developing countries. *Energy Policy*, 38 (1), 661-666. DOI: <https://doi.org/10.1016/j.enpol.2009.09.005>
- Nasreen, S., & Anwar, S. (2014). Causal relationship between trade openness, economic growth and energy consumption: A panel data analysis of Asian countries. *Energy Policy*, 69, 82-91. DOI: <https://doi.org/10.1016/j.enpol.2014.02.009>

- Nassani, A., Aldakhil, A.M., Abro, M.M.Q., & Zaman, K. (2017). Environmental Kuznets curve BRICS countries: Spot lightening finance, transport, energy and growth factors. *Journal of Cleaner Production*, 154, 474-487. DOI: <https://doi.org/10.1016/j.jclepro.2017.04.025>
- Onafowora, O.A., & Owoye, O. (2014). Bounds testing approach to analysis of the environment Kuznets curve hypothesis. *Energy Economics*, 44, 47-62. <https://doi.org/10.1016/j.eneco.2014.03.025>
- Organization for Economic Cooperation and Development-OECD. (2018). Renewable energy. Retrieved from <https://data.oecd.org/energy/renewable-energy.htm>
- Özokcu, S., & Özdemirb, Ö. (2017). Economic growth, energy, and environmental Kuznets curve. *Renewable and Sustainable Energy Reviews*, 72, 639-647. DOI: <https://doi.org/10.1016/j.rser.2017.01.059>
- Ozturk, I., & Al-Mulali, U. (2015). Investigating the validity of the environmental Kuznets curve hypothesis in Cambodia. *Ecological Indicators*, 57, 324-330. DOI: <https://doi.org/10.1016/j.ecolind.2015.05.018>
- Pablo-Romero, M. del P. & De Jesús, J. (2016). Economic growth and energy consumption: The energy-environmental Kuznets curve for Latin America and the Caribbean. *Renewable and Sustainable Energy Reviews*, 60, 1343-1350. DOI: <https://doi.org/10.1016/j.rser.2016.03.029>
- Panayotou, T. (1993). Empirical tests and policy analysis of environmental degradation at different stages of economic development (Working Paper WEP 2-22/WP 238; pp. 1-41). Retrieved from http://www.ilo.org/public/libdoc/ilo/1993/93B09_31_engl.pdf
- Pedroni, P. (2001). Fully modified OLS for heterogeneous cointegrated panels. In B.H. Baltagi, T.B. Fomby, & R. Carter Hill (Eds.), *Nonstationary panels, panel cointegration, and dynamic panels*. UK: Emerald Group Publishing Limited.
- Pesaran, M.H. (2004). General diagnostic tests for cross section dependence in panels. DOI: <https://doi.org/10.17863/CAM.5113>
- Pesaran, M.H. (2007). A simple panel unit root test in the presence of cross-section dependence. *Journal of Applied Econometrics*, 22 (2), 265-312. <https://onlinelibrary.wiley.com/doi/abs/10.1002/jae.951>
- Phillips, P.C.B. & Moon, H. (1999). Linear regression limit theory for non-stationary panel data. *Econometrica*, 67 (5), 1057-1111. Retrieved from <https://www.jstor.org/stable/2999513>
- Pontarollo, N., & Mendieta Muñoz, R. (2020). Land consumption and income in Ecuador: A case of an inverted environmental Kuznets curve. *Ecological Indicators*, 108, 1-13. DOI: <https://doi.org/10.1016/j.ecolind.2019.105699>
- Ramírez, M.D. (2003). México under NAFTA: A critical assessment. *The Quarterly Review of Economics and Finance*, 43 (5), 863-892. DOI: [https://doi.org/10.1016/S1062-9769\(03\)00052-8](https://doi.org/10.1016/S1062-9769(03)00052-8)
- Riti, J.S., Song, D., Shu, Y., & Kamah, M. (2017). Decoupling CO₂ emission and economic growth in China: Is there consistency in estimation results in analyzing environmental Kuznets curve? *Journal of Cleaner Production*, 166, 1448-1461. DOI: <https://doi.org/10.1016/j.jclepro.2017.08.117>

- Sarkodie, S.A., & Ozturk, I. (2020). Investigating the environmental Kuznets curve hypothesis in Kenya: A multivariate analysis. *Renewable and Sustainable Energy Reviews, 117*, 1-12. DOI: <https://doi.org/10.1016/j.rser.2019.109481>
- Shafiei, S., & Salim, R.A. (2014). Non-renewable and renewable energy consumption and CO₂ emissions in OECD countries: A comparative analysis. *Energy Policy, 66*, 547-556. DOI: <https://doi.org/10.1016/j.enpol.2013.10.064>
- Shujah-ur-Rahman, S.C., Chen, S., Saud, S., Saleem, N., & Bari, M.W. (2019). Nexus between financial development, energy consumption, income level, and ecological footprint in CEE countries: Do human capital and biocapacity matter? *Environmental Science and Pollution Research, 26*, 31856-31872. DOI: <https://doi.org/10.1007/s11356-019-06343-z>
- Sinha, A., & Bhattacharya, J. (2017). Estimation of environmental Kuznets curve for SO₂ emission: A case of Indian cities. *Ecological Indicators, 72*, 881-894. DOI: <https://doi.org/10.1016/j.ecolind.2016.09.018>
- Soytas, U., & Sari, R. (2009). Energy consumption, economic growth, and carbon emissions: Challenges faced by an EU candidate member. *Ecological Economics, 68* (6), 1667-1675. DOI: <https://doi.org/10.1016/j.ecolecon.2007.06.014>
- Sterpu, M., Soava, G., & Mehedintu, A. (2018). Impact of economic growth and energy consumption on greenhouse gas emissions: Testing environmental curves hypotheses on EU countries. *Sustainability, 10* (9), 1-14. DOI: <https://doi.org/10.3390/su10093327>
- Sugiawan, Y., & Managi, S. (2016). The environmental Kuznets curve in Indonesia: Exploring the potential of renewable energy. *Energy Policy, 98*, 187-198. DOI: <https://doi.org/10.1016/j.enpol.2016.08.029>
- United States-Mexico-Canada Agreement-USMCA. (2019). Environment — USMCA Chapter 24. Retrieved from <https://usmca.com/environment-usmca-chapter-24/>
- Urban, F., & Nordensvärd, J. (2018). Low carbon energy transitions in the Nordic countries: Evidence from the environmental Kuznets curve. *Energies, 11* (9), 1-17. DOI: <https://doi.org/10.3390/en11092209>
- Vlontzos, G., Niavis, S., & Pardalos, P. (2017). Testing for Environmental Kuznets curve in the EU Agricultural Sector through an eco-(in)efficiency index. *Energies, 10* (2), 1-15. DOI: <https://doi.org/10.3390/en10121992>
- Wang, K.M. (2012). Modelling the no linear relationship between CO₂ emissions from oil and economic growth. *Economic Modelling, 29* (5), 1537-1547. DOI: <https://doi.org/10.1016/j.econmod.2012.05.001>
- World Bank-WB. (2020). Available online: <http://databank.bancomundial.org/data> (accessed on 5 January 2020).
- World Bank-WB. (2016). Available online: <http://databank.bancomundial.org/data> (accessed on 30 July 2017).
- Yang, X., Lou, F., Sun, M., Wang, R., & Wang, Y. (2017). Study of the relationship between greenhouse gas emissions and the economic growth of Russia based on the environmental Kuznets curve. *Applied Energy, 193*, 162-173. DOI: <https://doi.org/10.1016/j.apenergy.2017.02.034>

- Zhang, Ch., Wang, Y., Song, X., Kubota, J., He, Y., Tojo, J., & Zhu, X. (2017). An integrated specification for the nexus of water pollution and economic growth in China: Panel cointegration, long-run causality and environmental Kuznets curve. *Science of the Total Environment*, 609, 319-328. DOI: <https://doi.org/10.1016/j.scitotenv.2017.07.107>
- Zhang, X.P., & Cheng, X.M. (2009). Energy consumption, carbon emissions, and economic growth in China. *Ecological Economics*, 68 (10), 2706-2712. DOI: <https://doi.org/10.1016/j.ecolecon.2009.05.011>
- Zhao, H., Guo, S., & Zhao, H. (2018). Characterizing the influences of economic development, energy consumption, urbanization, industrialization, and vehicles amount on PM2.5 concentrations of China. *Sustainability*, 10 (7), 1-19. DOI: <https://doi.org/10.3390/su10072574>
- Zilio, M.I. (2012). Curva de Kuznets ambiental: la validez de sus fundamentos en países en desarrollo. *Cuadernos de Economía*, 35 (7), 43-54. DOI: [https://doi.org/10.1016/S0210-0266\(12\)70022-5](https://doi.org/10.1016/S0210-0266(12)70022-5)
- Zoundi, Z. (2017). CO₂ emissions, renewable energy and the environmental Kuznets curve, a panel cointegration approach. *Renewable and Sustainable Energy Reviews*, 72, 1067-1075. DOI: <https://doi.org/10.1016/j.rser.2016.10.018>